

VOL. 1 ISSUE 4 • APRIL 2022

ASSESSMENT QUARTERLY

UT Knoxville's Assessment Steering
Committee Quarterly Newsletter



Need inspiration? Exemplar assessment reports available on SharePoint

The Assessment Steering Committee at UT Knoxville has collected reports from colleges across the university to serve as exemplars for program assessment report writers. Reports in this collection are representative of the 2020-2021 academic year. Special thanks goes out to the program faculty who volunteered reports toward this resource.

Exemplar program assessment reports are available on [SharePoint](#).



Still stuck?

Other resources are also available at

<https://oira.utk.edu/assessment-planning-and-resources/>

Certificate for Program Assessment Coming Soon!

A self-paced certificate course for assessment professionals is coming to UT Knoxville! Delivered through Canvas Catalog, the certificate will begin enrollment Fall 2022. This certificate is designed for individuals interested in enhancing their skills and will not be required for participation in assessment practices at UT Knoxville. More details will be announced in the next issue!

This issue:

Exemplar Assessment Reports

Certificate for Academic
Program Assessment coming
Fall 2022

AALHE Membership &
Conference

Mini-Assessment Day

Professional Development
Opportunities

AALHE Institutional Membership & AALHE 2022 Conference

The Assessment Steering Committee at UT Knoxville is pleased to announce the renewal of an Unlimited Institutional Membership to the Association for the Assessment of Learning in Higher Education (AALHE)

AALHE's mission is to develop and support a community of educators and inform assessment practices in higher education to foster and improve student learning and institutional quality. As a member of AALHE, you have access to a wealth of resources that will help you as an assessment professional, including networking opportunities, recorded webinars, community forums, and more.

To create an individual profile, please contact Ashley Browning at ashleyb@tennessee.edu.



The aforementioned Institutional membership provides anyone at the university interested in attending the AALHE 2022 Conference a discounted registration rate. AALHE 2022 will take place June 6-9, 2022 with place-based learning in Providence, Rhode Island and online virtual learning on the Whova platform. No matter how you join, AALHE 2022 will inspire and connect us as we reengage and learn together to support the assessment of student learning.

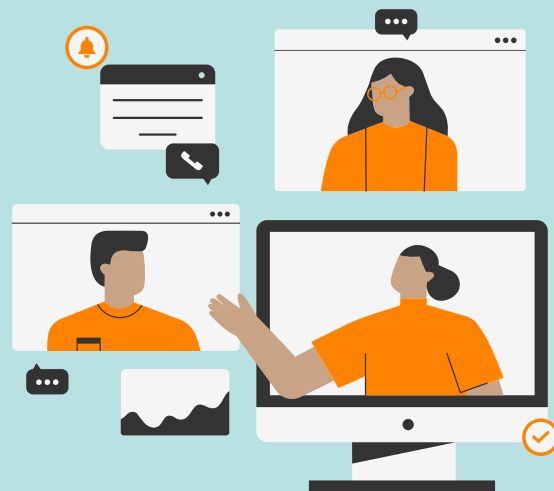
For more information on AALHE 2022, [click here](#).

To register for the conference at the Institutional Member rate (\$350 in-person; \$125 online), please contact Ashley Browning at ashleyb@tennessee.edu. An invoice will be sent for your department to process.

Mini-Assessment Day Virtual Workshop

The Assessment Steering Committee will be offering “Mini Assessment Day” virtual workshops later this month.

As the name suggests, it is a scaled-down version of the Assessment Day training offered to meta-assessment reviewers every fall. Attendees will be given an overview of how annual assessment reports are reviewed here at UT Knoxville and the components that each report must contain. Additionally, attendees will have the opportunity to discuss report improvement and view examples of excellent assessment work.



All are welcome to attend and may be of particular interest to faculty and staff who are relatively new to their role in program assessment and/or want to learn more about participating in the meta-assessment process. No registration is required.

Tuesday, April 26th: 1-3 p.m. Zoom link: tiny.utk.edu/MiniAssessmentDay426

Wednesday, April 27th: 10 a.m.-12 p.m. Zoom link: tiny.utk.edu/MiniAssessmentDay427

For any questions, please contact Ashley Charsha at acharsha@utk.edu.

Professional Development & Networking Opportunities

To access a free collection of open-access resources introducing the basics of assessing student learning, please visit tiny.utk.edu/GettingStarted

James Madison University has launched a free resource page using a taxonomy of assessment knowledge, skills, and attitudes described in the recently developed [Assessment Skills Framework](#).

Is your program doing something great? Want to share tips and tricks you have learned along the assessment journey?

Contact [Ashley Browning](#) to be featured as our Program Spotlight!